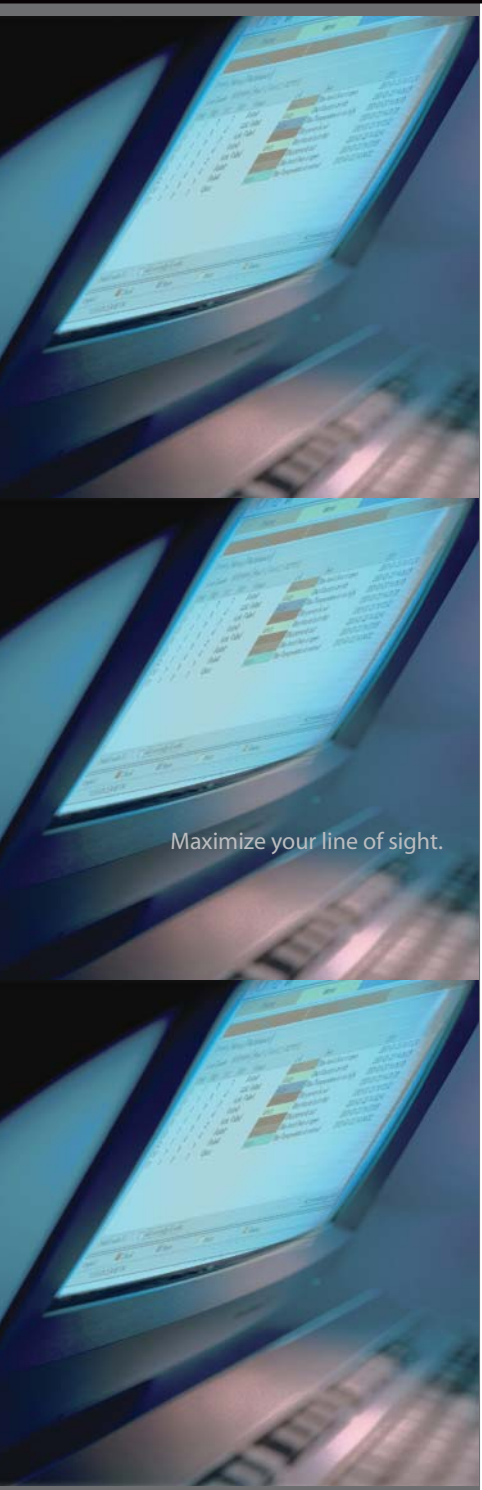
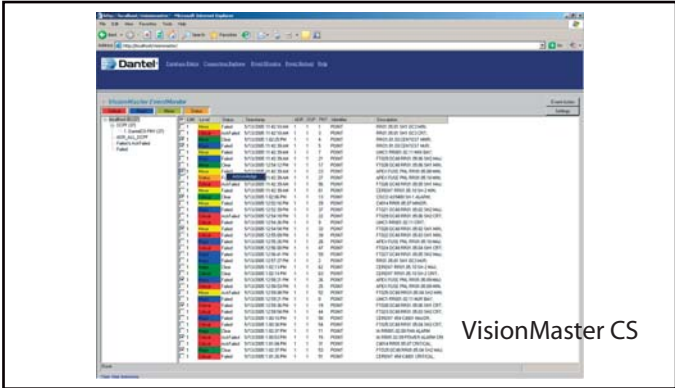


### Data Sheet



www.dantel.com

Maximize your line of sight.



VisionMaster CS

Dantel's VisionMaster<sup>®</sup> Client-Server is a Microsoft-certified, client-server implementation of the Dantel legacy application VisionMaster 2.X. Its extendible architecture employs state-of-the-art technologies like XML, .Net Remoting and XML Web Services, making VisionMaster CS well suited for future application integration.

VisionMaster CS consists of a server or servers that run in the background at all times, collecting alarms from various network elements. The server is hosted under Microsoft IIS, which provides security utilizing Windows<sup>®</sup> Authentication and HTTP/HTTPS technologies. VisionMaster also provides easy accessibility. Client PCs can connect to a server by simply using its IP address. Both the non-browser-based and the browser-based applications can be used to connect to the CS server. Once connected, events are displayed as they occur.

#### How does VisionMaster CS improve QoS and benefit your business?

- Real time alerts to all clients
- Single clients monitor multiple servers
- Reliable connectivity to server(s)
- User-defined data storage
- Alarms grouped by department, region or other criterion
- Alarms filtered through standard SQL queries
- Server networks built quickly and easily

## Data Sheet

### Key Features

- Centralized servers running on the Microsoft .NET platform using XML Web Services and Remoting
- Unlimited simultaneous clients
- Operates across firewalls
- Real-time DCPF alarm reporting and logging
- Non-browser and browser-based client access
- Live alarms and alarm history grouped by link number, protocol and your own AORs
- AORs based on standard SQL query, which filters live alarms as well as history alarms
- Alarms, live and history, filtered by levels
- Alarms sorted by connection, date/time stamp, status, level, point or display identifier and description
- Audit Log and Alarm History Log with reports
- Virtually unlimited IP and serial connections
- Reports NE failures
- Modify NE data remotely
- Upload/download to NEs
- Authorization using server local groups
- Encrypted data communication with HTTPS using third party certificates
- Device emulators for all DCPF types
- Generic database editor for all NE types
- Database conversions from one type to another
- Data stored as XML for sharing and interoperability
- Work offline for editing databases
- Bulk database changes
- LAC annunciation and .wav file emulator, based on AOR
  
- Email/paging (Available soon)
- SNMP (Available soon)
- Microsoft SQL database support (Available soon)

www.dantel.com

### System Specifications

#### Recommended Minimum Requirements

- 1 GHz Pentium III or equivalent Celeron or AMD processor
- 30 GB hard disk space for system and database files
- 2 GB system memory
- 4X CD ROM or CD/DVD-R writer
- 10/100 Base-T or 10/100/1000 Base-T network connection
- SVGA video display, at a resolution of 1024 X 768 at 16-bit color
- Mouse or other pointing device
- Microsoft .NET Runtime 1.1 with SP 1.0
- Microsoft IIS 5.0 or higher
- VisionMaster CS server running Windows 2000 Pro or Windows XP Pro with the latest SP
- VisionMaster CS client running Windows 2000 Pro or Windows XP Pro with the latest SP
- Windows XP, 2003 Server, 2000 and NT compatible

### Ordering Information

- VisionMaster CS - A22-46900-30
- Area of Responsibility - VCS-AOREN-00
- Web browser client - VCS-BRWSR-00
- Connection count - VCS-CONCT-XX
- Device DB editor enable - VCS-DBED-00
- Device DB upload/download - VCS-DBXFR-00
- DCPF protocol polling - VCS-DCPEN-00
- Event Monitor enable - VCS-EVTLG-00
- History and reports enable - VCS-HSTRP-00
- Upstream TL1 enable - VCS-TL1UP-00
- Concurrent users count - VCS-USRCT-XX

Dantel Inc. 2991 North Argyle Avenue Fresno CA 93727-1388 Phone: 559.292.1111 FAX: 559.292.0252 www.dantel.com	Inside Sales 800.432.6835 Extension 1672  Customer Support and Services 800.432.6835 Option 4
---	---



 **Dantel**<sup>®</sup>  
We're always looking for trouble.