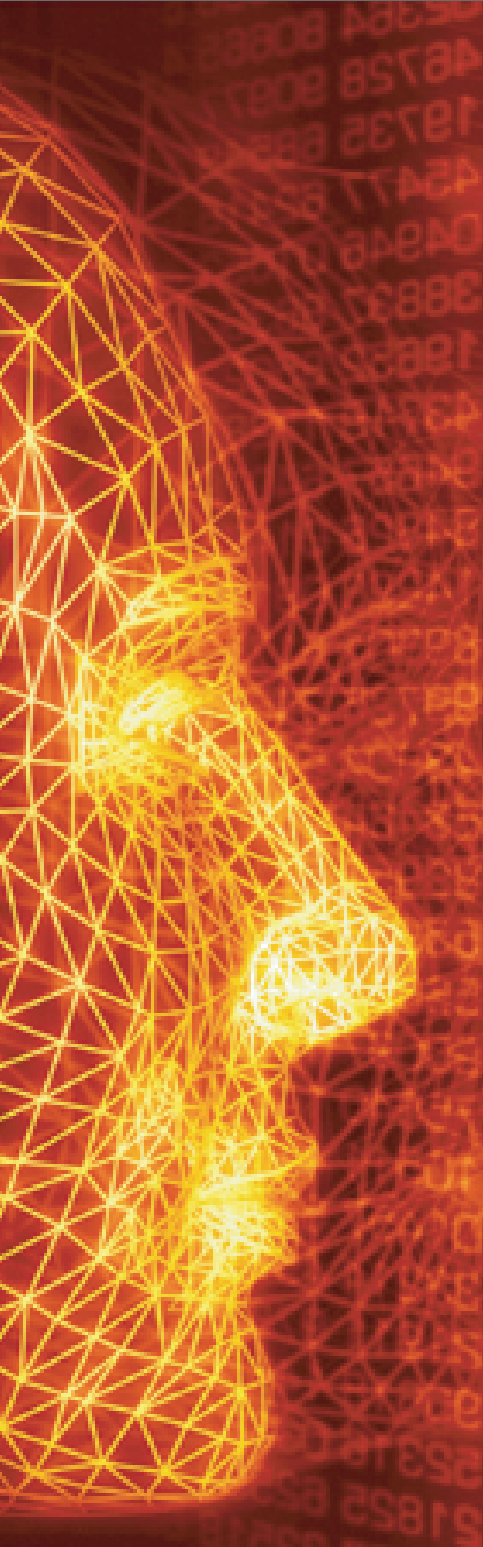


# Data Sheet

Rev. 10.01.08

Networks are evolving.  
Management is essential.



www.dantel.com



Dantel's WebMon<sup>®</sup> Matrix is a modular, multifunctional alarm monitoring system that combines telemetric transport and security capabilities in a single platform.

The WebMon Matrix provides remote alarm monitoring, visual verification, and remote office control. The Matrix collects and transports alarm status from office communications equipment and environmental alarms, to the network host or site administrator.

The WebMon Matrix features a modular design capable of housing three dedicated system cards, one communications card, and six individual application cards. The Matrix user interface is browser-based. It communicates in SNMP and DCM protocols, via Ethernet or TCP/IP, dial-up or wireless, and it provides dial-up and email notification capabilities.

### How does the Matrix improve QoS and benefit your business?

- Always-on design for long-term, maintenance-free operation
- Wireline, dial-up or wireless connectivity for local or remote access
- Adaptable to all operating conditions and remote environments
- Mix and match card options for scalable configuration
- SNMP for dependable network management
- Browser-based user interface for near-effortless provisioning

## Data Sheet

### Key Features

- LCD Status; Command Line Interface (CLI)
- SNMP v1, v2c, v3 traps and v2c informs
- Decision-driven inputs, analog and discrete (arithmetic and Boolean)
- DCM, MODBUS<sup>®</sup>, TL1 upstream, DCP/F, E2A over IP, E2A Host, TABS
- Discrete inputs, 8, 16 and 32
- Analog inputs, 8 per card
- Discrete outputs, 8 Form A, 5 Form C, 10 Form C, 16 Form A
- Serial ports, 1, 2 or 4 (options)
- Separate user account levels
- Optional Ethernet switch
- Cellular to Ethernet gateway
- Optional fiber interface
- Available dial-up backup
- GPS alarms based on latitude, longitude and speed
- Email based alarms
- Ethernet port forwarding
- PSTN modem dial-up
- CDMA Wireless modems
- Scheduling
- Terminal Server, 4 ports per card
- Dual, redundant power inputs
- 12 VDC, 24 VDC, -48 VDC, 110/220 VAC
- Battery and gas monitoring sensors

### Communication Options

- 10/100 Ethernet
- RS-232, RS-485, 202T
- Dial-in, dial-out
- CDMA
- 202T Tone Modem
- E2A/IP

### Other Features

- NTP Server Synchronization
- 40-bit encryption
- Media converter
- Real-time clock
- External indicators for status, communications and Ethernet
- Pluggable screw terminals for power, relay and alarms
- Internal fault detection

### Certification

- NEBS, FCC, CE certified

### System Specifications

#### Event Detection

- Temperature/Humidity Option - 4 thresholds each
- Discrete inputs, wet or dry, individually configurable
- Analog inputs, -100 V to 100 V, multiple configurable event thresholds
- Remote analog sensors, 12 and 24 VDC, multiple configurable event thresholds
- Network device monitoring via ping (ICMP), up to 6 devices
- Power inputs, event generated on power loss or restoration, external indicator
- Derived (logical) alarms

#### Event Response

- SNMP traps, up to 16 targets, any combination of version 1, 2c or 3
- Version 2C informs
- Email, up to 16 targets
- Discrete outputs, manual or automatic operation

#### Monitoring and Configuration

- Security - user configurable
- Web interface, single page shows the state of all inputs, third-party camera view
- SNMP, state of all inputs accessible, v3 authentication and encryption, allows non-standard port numbering
- FTP, database backup and recovery, software upgrades
- Scheduling - 6 options, user configurable

#### Mechanical

- Height, 1.75"
- Width, 17"
- Depth, 12"
- Weight, 6 lbs
- Chassis, powder-coated aluminum
- Mounting, 19" or 23" rack

#### Extended Operating Temperature

- -40 to 85 deg. C

#### Compliance

- Telcordia NEBS Level 3
- EN 300/386
- FCC Part 15, Subpart B

www.dantel.com

2991 North Argyle Avenue  
Fresno CA 93727-1388  
Inside Sales 800.432.6835 Option 2  
Customer Support 800.432.6835 Option 1  
FAX: 559.292.0252  
Visit us at [www.dantel.com](http://www.dantel.com)

 **Dantel**<sup>®</sup>  
We're always looking for trouble.