



A communications network monitoring system for

Central Offices, Controlled Environmental Vaults,

Huts, Cabinets, and other remote facilities.

Protect your reputation and your critical infrastructure.

Get the PointMaster® Eagle from Dantel.

- 
- Network Element alarms
 - Environmental status
 - Web browser interface
 - Streamlined installation
 - Reports mission critical-data in multiple protocols
 - Operates over serial, dial-up or TCP/IP
 - Retains history data indefinitely

PointMaster® Eagle
Concentration. Management. Reporting.

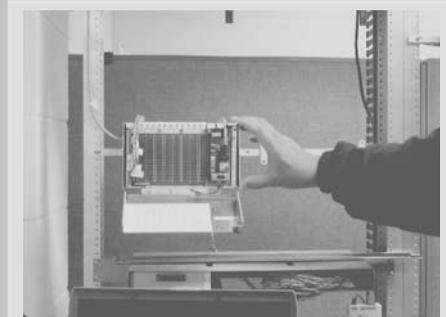
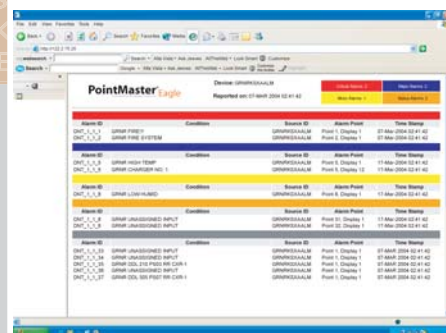
The PointMaster Eagle is a communications network monitoring system that provides concentration, management and reporting of Network Element alarms, discrete miscellaneous alarms and environmental status, for a variety of industries and applications such as Central Offices, Controlled Environmental Vaults, Huts, Cabinets, and other remote facilities.

The Eagle, with its NEBs™ Level 3/UL-certified rating, is designed to improve your QoS by intelligently collecting and reporting mission-critical data. It detects events, converts and reports the data in any one of several protocols, and interfaces with any existing centralized network operations center, or with Dantel's VisionMaster® MicroNOC™ management system. The Eagle

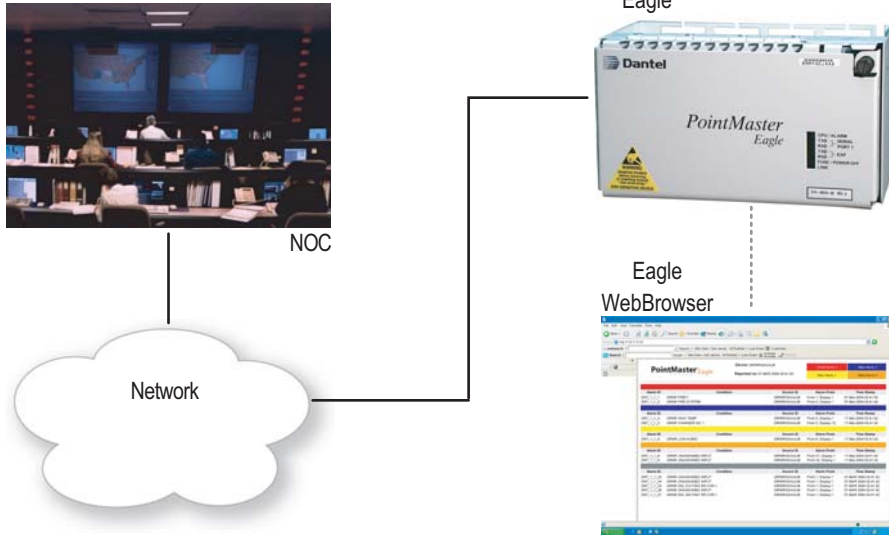
supports the Dantel web browser for local and remote access, and operates in Asynchronous, Dial-up or TCP/IP networks.

The Eagle features a streamlined installation process, with minimal wiring and configuration. Craft, Ethernet and Host ports exceed the NEBs Level 3 requirement for transient voltage protection. An optional history and NV-RAM feature is available to retain alarm data indefinitely. Additional commands provide the tools to view and clear alarm logs at your discretion.

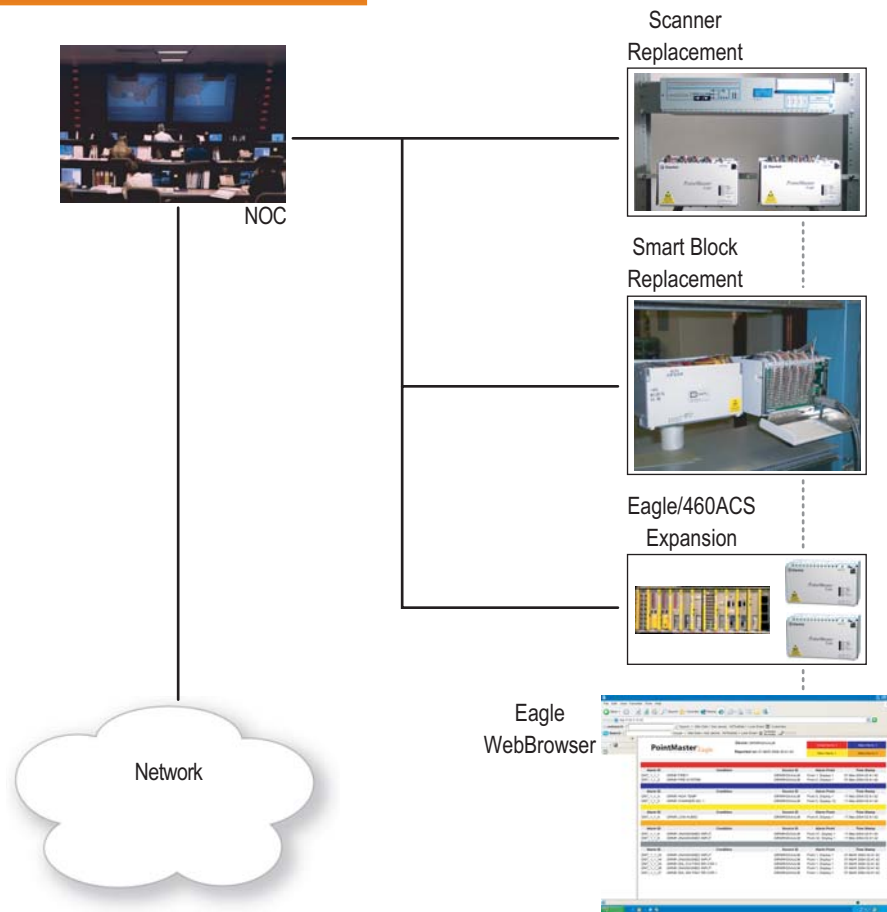
New features for the Eagle are always in development. Protect your reputation and your critical infrastructure with Dantel's Eagle monitoring system.



Eagle Standalone Application



Eagle Replacement Solutions



Key Features

- TL1, DCP, DCPF, TABS, TBOS, DCM and SNMP
- Multiple TL1/IP sessions
- Multiple DCPF/IP sessions
- Multiple SNMP/IP sessions
- 64 to 256 scalable individually reversible alarm inputs
- Intrusion, fire, MUX, circuit switching and environmental discrete alarms
- Alarm input rate, period filtering and history
- 4 to 32 scalable control outputs
- 4-level configurable alarm-triggered control outputs
- Control output feedback reporting
- Dual power input
- Direct or connectorized
- Modular plug-ins
- 10/100 BaseT Ethernet
- Dual serial responder ports
- RS-232, RS-485 or 202 Tone Modem
- CLI and WebBrowser interfaces
- Menu-driven configuration, Craft port
- VM editor configuration, serial or IP
- 64-character TL1 standard definable description field
- System and provisioning password
- 15 character definable character prompt
- POST at turn-on
- FTP operating system upgrades
- Database conversion
- IP conversion to serial port
- Small footprint
- NEBs, CE Mark and UL/CSA certified
- Rack, IDF, MDF or wall mount
- Commercial operating temperature

Ordering Information

**Contact Dantel Inside Sales at
800.432.6835 ext. 1,672**

Another Innovative Product From The Industry Leader

Since 1971, Dantel has been a recognized leader in the development, design, and manufacture of surveillance and management solutions for critical infrastructure protection. As a Microsoft® Certified Partner, we provide our customers with advanced solutions and benefits unsurpassed in our industry. Dantel is an ISO9000:2000 certified company. Today's business climate demands secure and reliable methods for monitoring critical infrastructure. Today, more companies are demanding Dantel.